



Navigators Walk, London, E3

BUTLER & STAG





# Artfully presented one bedroom apartment combining calming waterside energy with unique ambient design and colours.



- Ambient One Bedroom Apartment
- Private Balcony with Serene Views
- Sought-After Fish Island Location
- Part Furnished
- Waterside Development
- Vibrant Open-Plan Kitchen / Living
- Hackney Wick Overground Station Nearby
- Available from 12th September 2025

Situated opposite Old Ford Lock and directly overlooking the water, this truly special apartment is positioned on the second floor of a modern development on ultra-trendy Fish Island.

The location not only provides a blend of convenience in the form of local artisan offerings and Hackney Wick overground station nearby but also the opportunity for outdoor escape along the waterways and in the local Queen Elizabeth Olympic and Victoria parks.

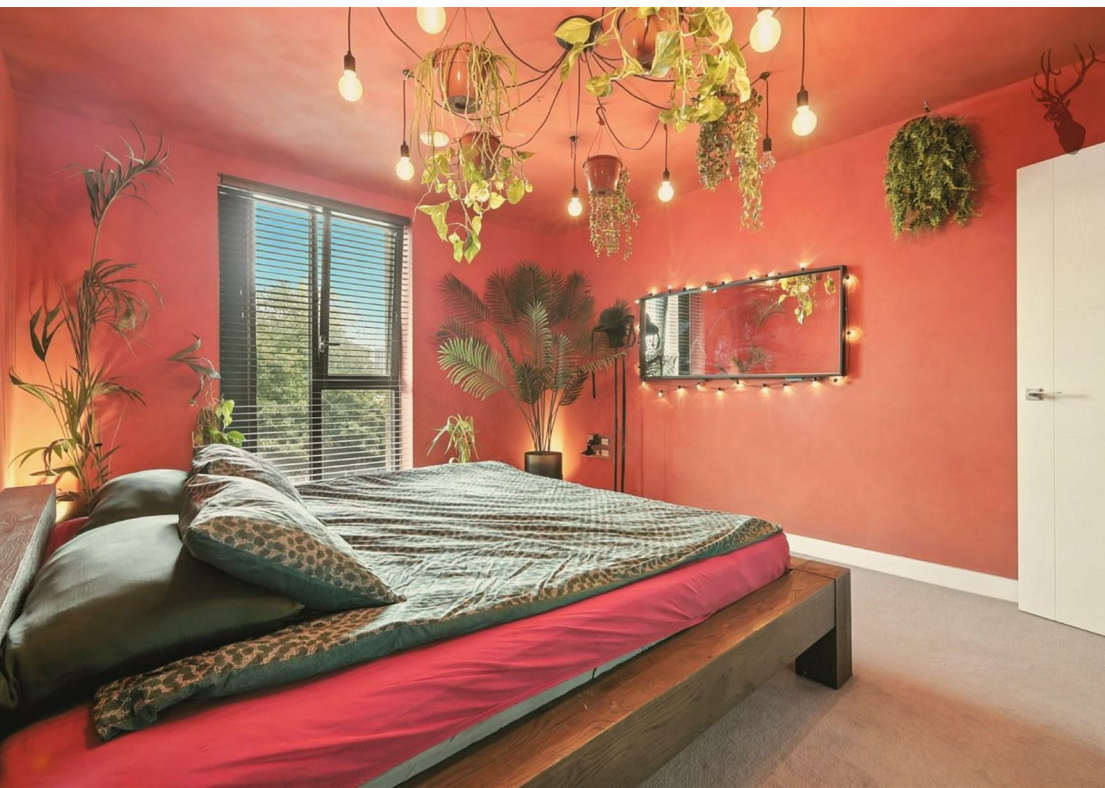
Spanning over 550 Sq/Ft, this must-see property features an impressive open-plan kitchen / living space which opens out onto a private balcony enjoying those coveted, serene water views. Further comprising of a generous double bedroom with fitted wardrobes, a contemporary bathroom and plenty of internal storage, this apartment would be perfectly suited to a single professional or a couple.

Offered part furnished and available from 12th September 2025.

EPC Rating B  
Council Tax Band C









## Barker House Fish Island

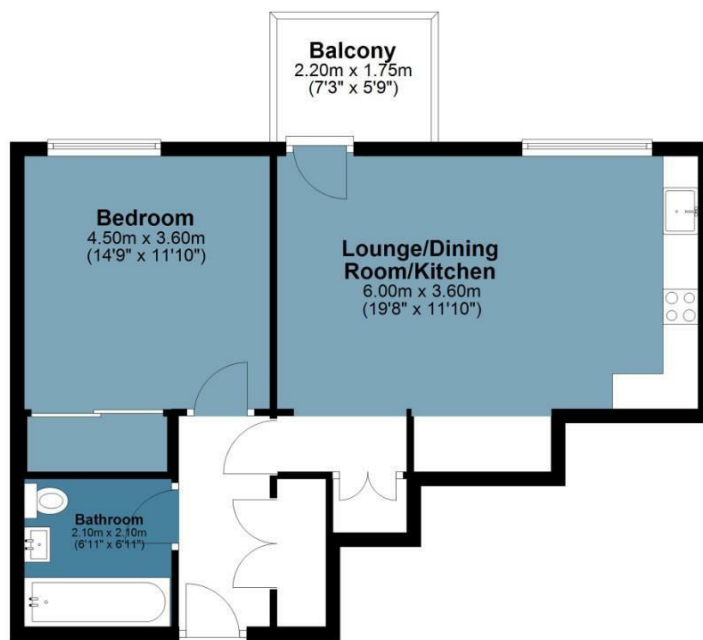
Approx. Gross Internal Area 52 Sq M ( 559.5 Sq Ft )

BUTLER & STAG



### Second Floor

Approx. 52.0 sq. metres (559.5 sq. feet)



Measurements are approximate and for illustration purposes only. While we do not doubt the accuracy and completeness, we advise you conduct a careful independent assessment of the property to determine monetary value.  
© @modephoto.uk www.modephoto.co.uk

IMPORTANT NOTICE - These particulars have been prepared in good faith and they are not intended to constitute part of an offer or contract. We have not performed a structural survey on this property and the services, appliances and specific fittings have not been tested. All photographs, measurements, floor plans and distances referred to are given as a guide and should not be relied upon.

BUTLER & STAG

☎ 020 8102 1236

🏠 508 Roman Road, Bow, London, E3 5LU

✉ bow@butlerandstag.com

[www.butlerandstag.uk](http://www.butlerandstag.uk)